

Parts catalog

Legend

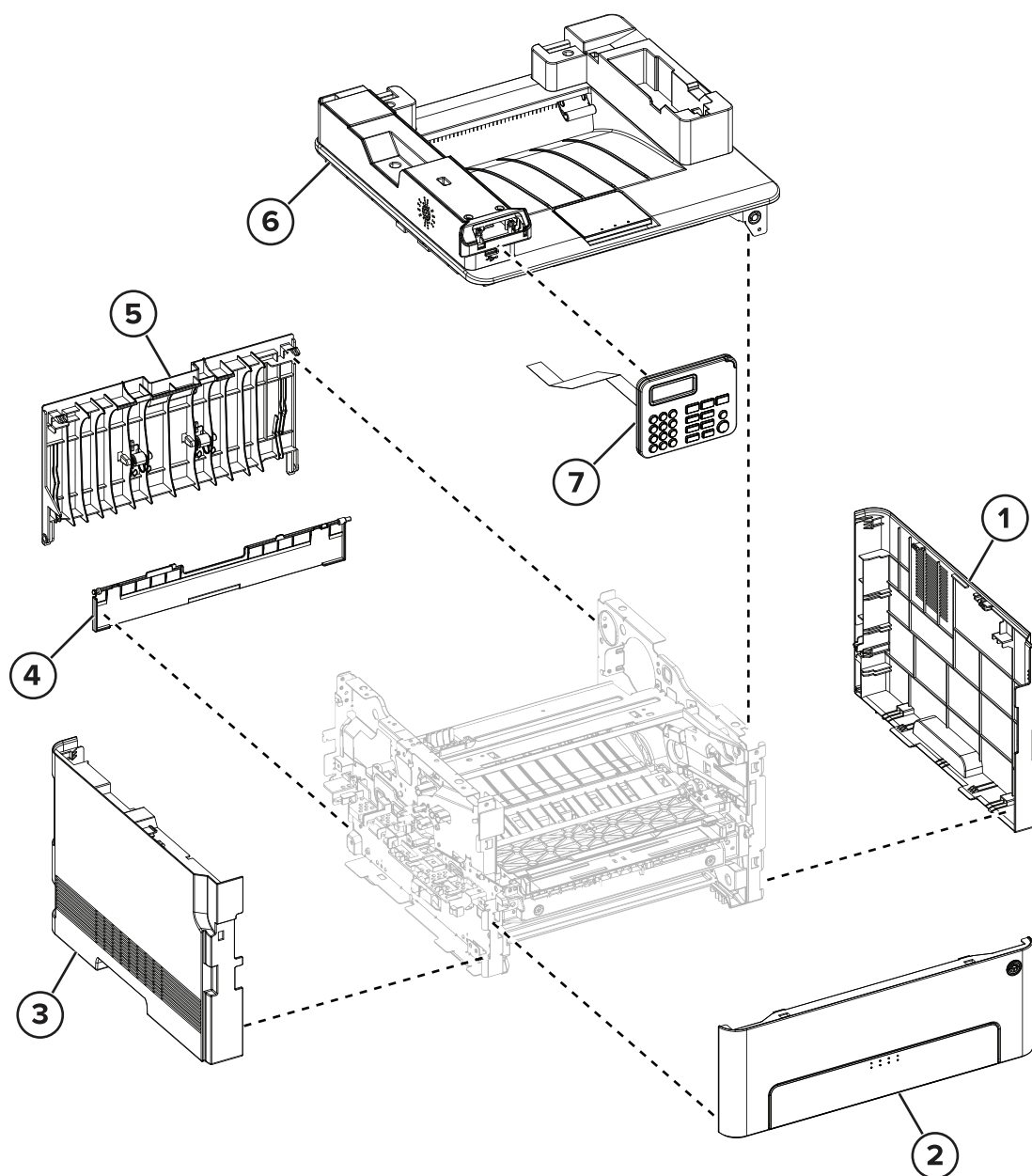
The following column headings are used in the parts catalog:

- **Asm-index**—Identifies the item in the illustration.
- **Part number**—Identifies the unique number that correlates with the part.
- **Units/mach**—Refers to the number of units actually used in the base machine or product.
- **Units/FRU**—Refers to the number of units in a particular FRU.
- **Description**—Describes the part.

The following abbreviations are used in the parts catalog:

- **NS** (not shown) in the Asm-index column indicates that the part is procurable but is not pictured in the illustration.
- **PP** (parts packet) in the Description column indicates that the part is contained in a parts packet.

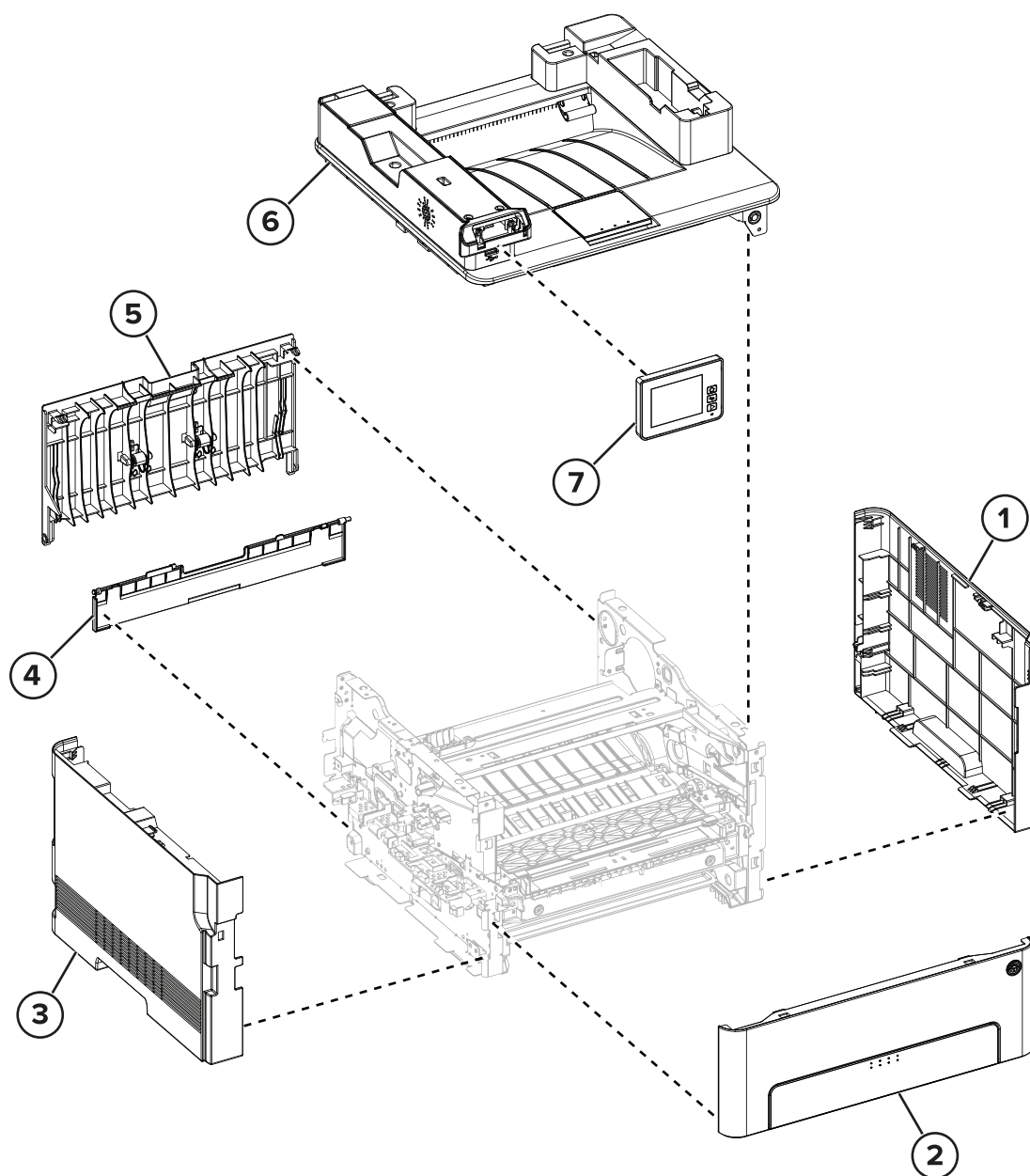
Assembly 1: Covers (MB2236adw)



Assembly 1: Covers (MB2236adw)

Asm-index	P/N	Units/mach	Units/FRU	Description	Removal procedure
1	41X2449	1	1	Right cover	“Right cover removal” on page 238
2	41X2450	1	1	Front door	“Front door removal” on page 248
3	41X2451	1	1	Left cover	“Left cover removal” on page 232
4	41X2448	1	1	Bottom rear door	“Bottom rear door removal” on page 251
5	41X2447	1	1	Rear door	“Rear door removal” on page 250
6	41X2446	1	1	Top cover	“Top cover removal” on page 255
7	41X2479	1	1	2-line control panel	“2-line control panel removal” on page 243

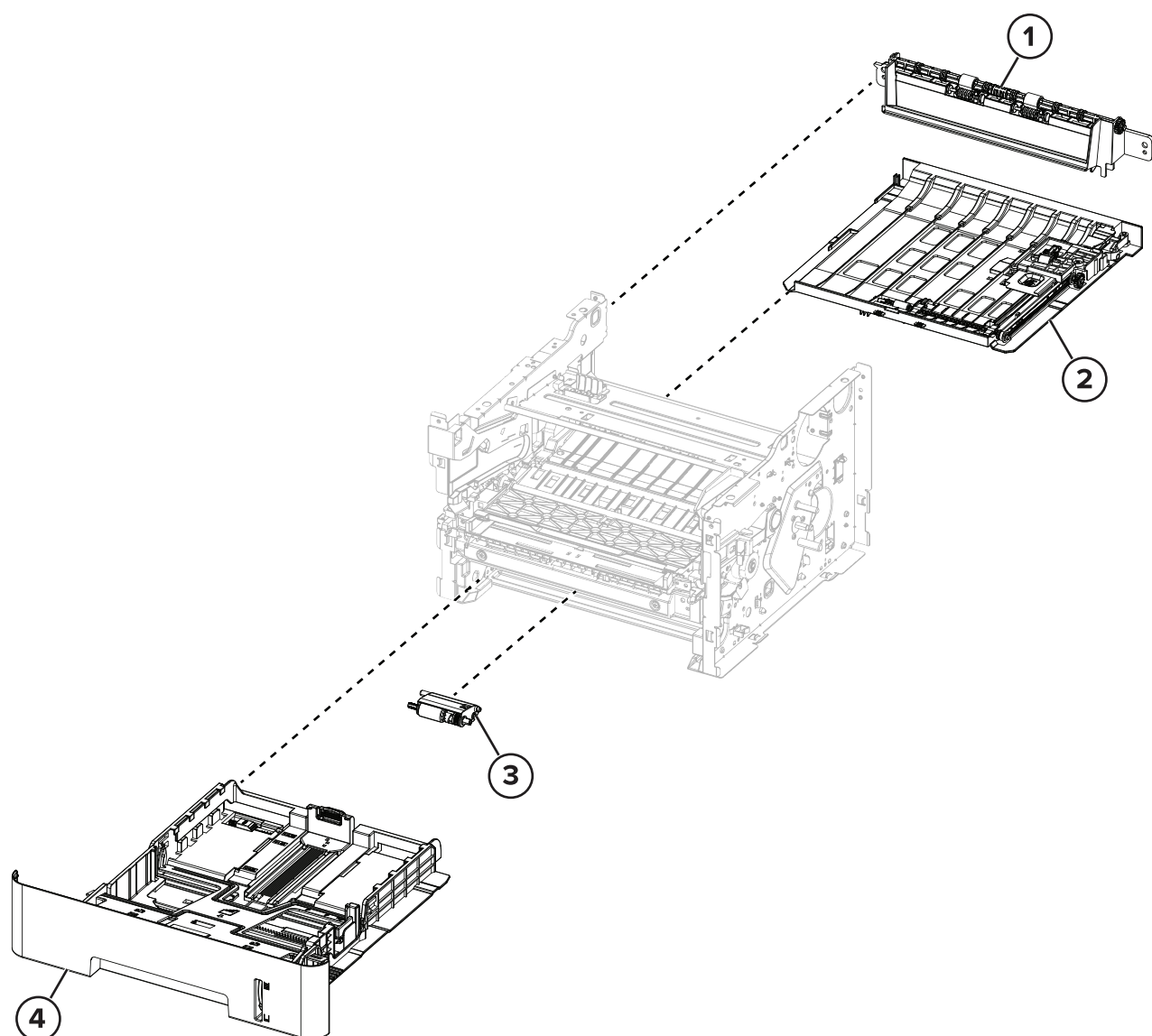
Assembly 2: Covers (MB2236adwe)



Assembly 2: Covers (MB2236adwe)

Asm-index	P/N	Units/mach	Units/FRU	Description	Removal procedure
1	41X2449	1	1	Right cover	“Right cover removal” on page 238
2	41X2450	1	1	Front door	“Front door removal” on page 248
3	41X2451	1	1	Left cover	“Left cover removal” on page 232
4	41X2448	1	1	Bottom rear door	“Bottom rear door removal” on page 251
5	41X2447	1	1	Rear door	“Rear door removal” on page 250
6	41X2446	1	1	Top cover	“Top cover removal” on page 255
7	41X2516	1	1	2.8-in. control panel	“2.8-in. control panel removal” on page 246

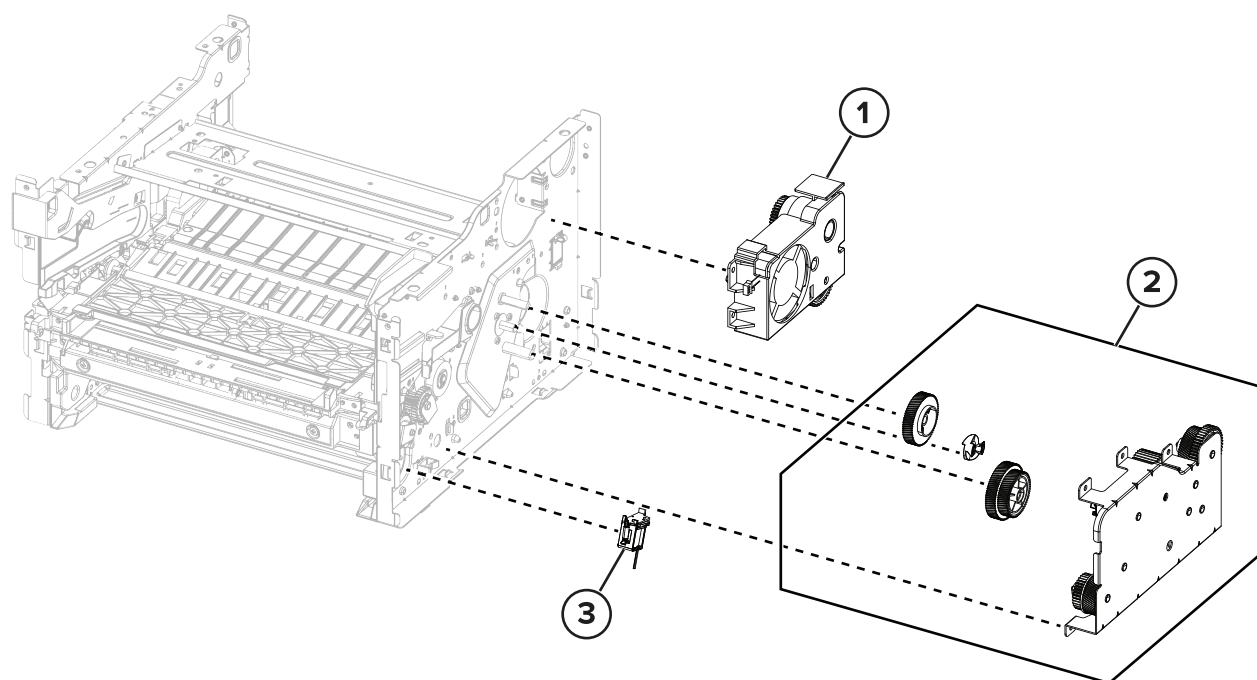
Assembly 3: Paper path



Assembly 3: Paper path

Asm-index	P/N	Units/mach	Units/FRU	Description	Removal procedure
1	41X2453	1	1	Redrive	“Redrive removal” on page 251
2	41X2454	1	1	Duplex unit	“Duplex unit removal” on page 250
3	41X2455	1	1	Pick roller	“Pick rollers removal” on page 268
4	41X2452	1	1	Tray insert	--

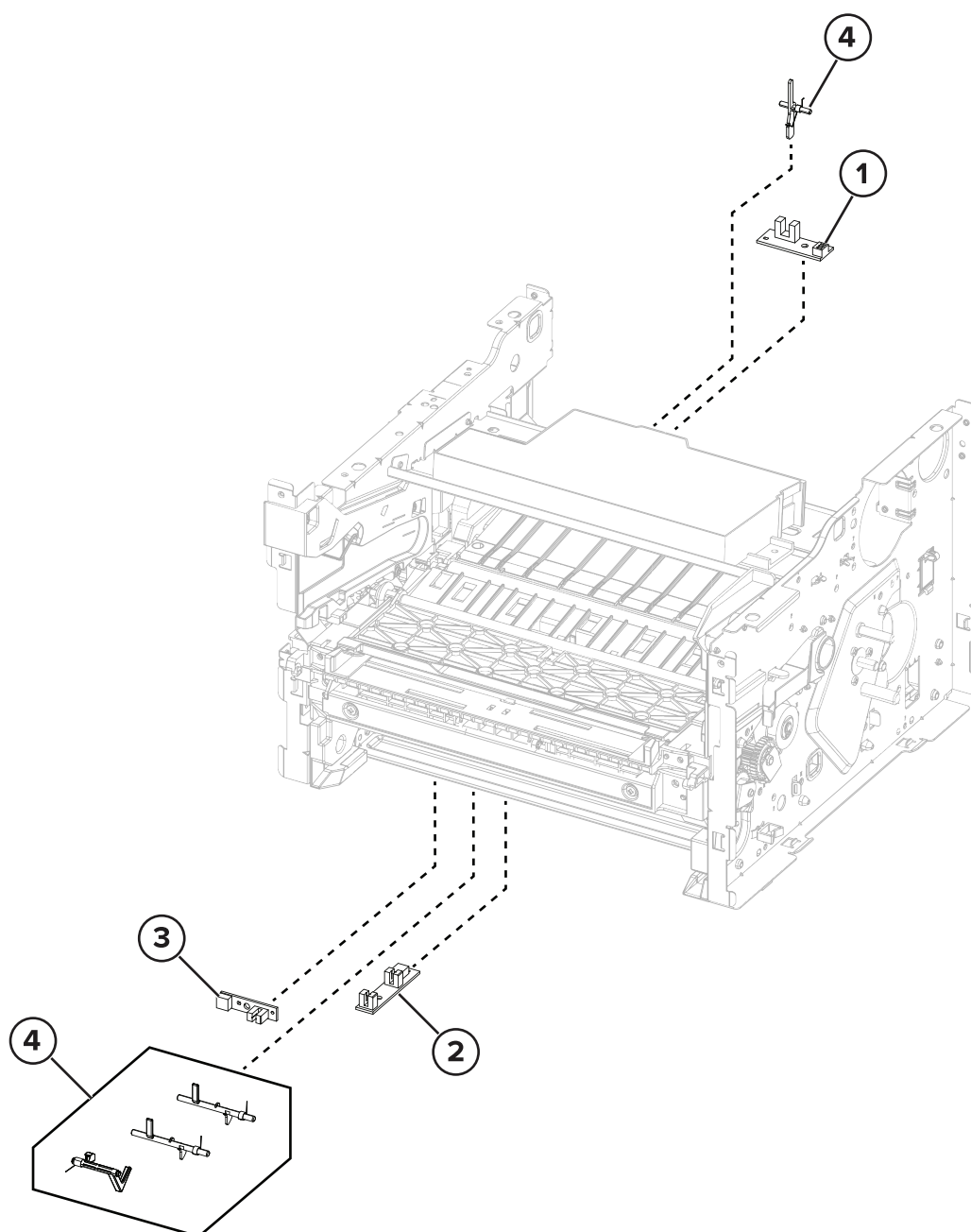
Assembly 4: Drive



Assembly 4: Drive

Asm-index	P/N	Units/mach	Units/FRU	Description	Removal procedure
1	41X2470	1	1	Fan assembly	“Fan assembly removal” on page 242
2	41X2471	1	1	Main drive	“Main drive removal” on page 239
3	41X2472	1	1	Pick solenoid	“Pick solenoid removal” on page 241

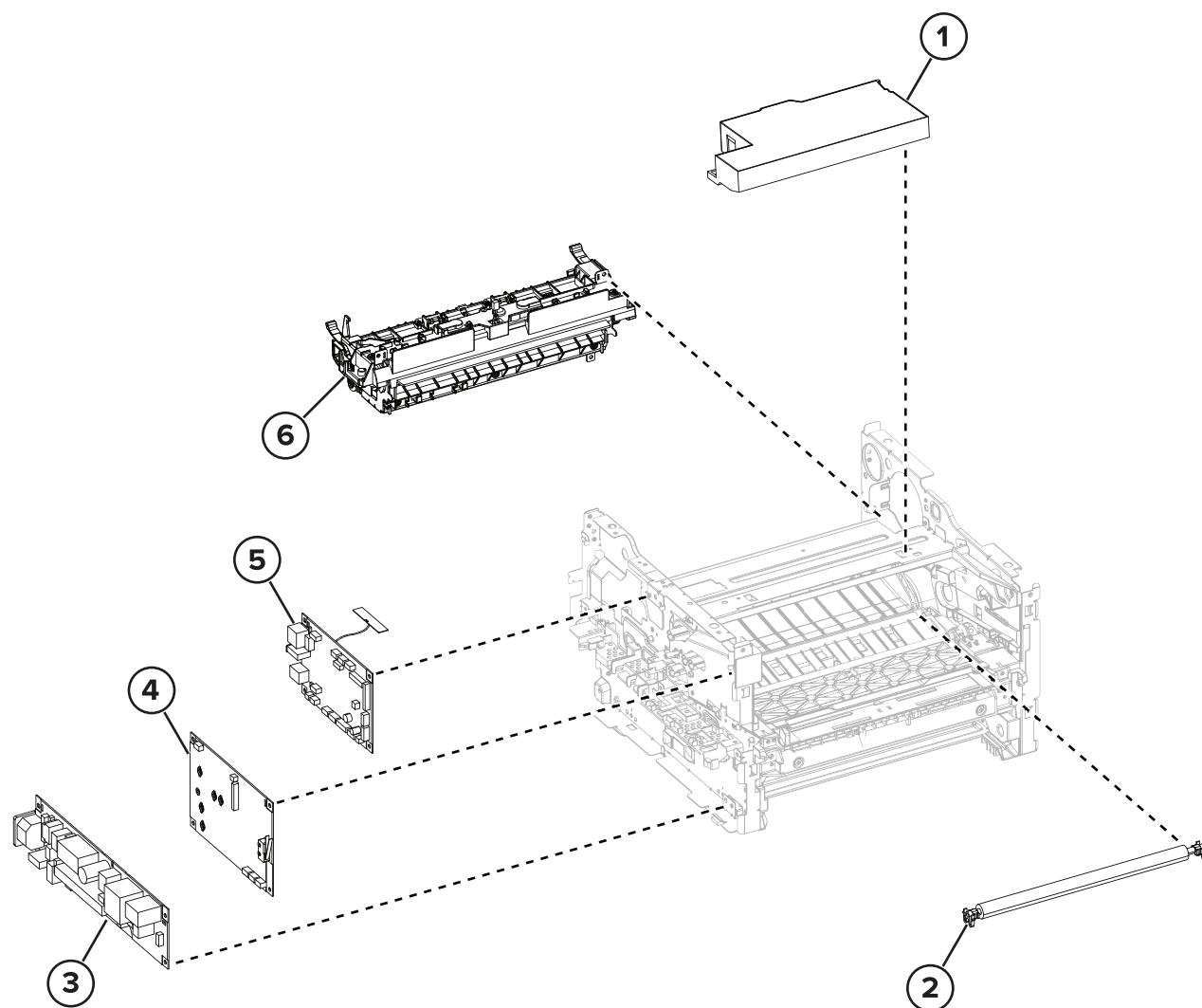
Assembly 5: Sensors



Assembly 5: Sensors

Asm-index	P/N	Units/mach	Units/FRU	Description	Removal procedure
1	41X2468	1	1	Sensor (fuser exit)	“Sensor (fuser exit) removal” on page 263
2	41X2467	1	1	Sensor (input)	“Sensor (input) removal” on page 265
3	41X2466	1	1	Sensor (paper present)	“Sensor (paper present) removal” on page 264
4	41X2469	1	1	Sensor flags	“Input sensor flags removal” on page 267 “Fuser exit flag removal” on page 254

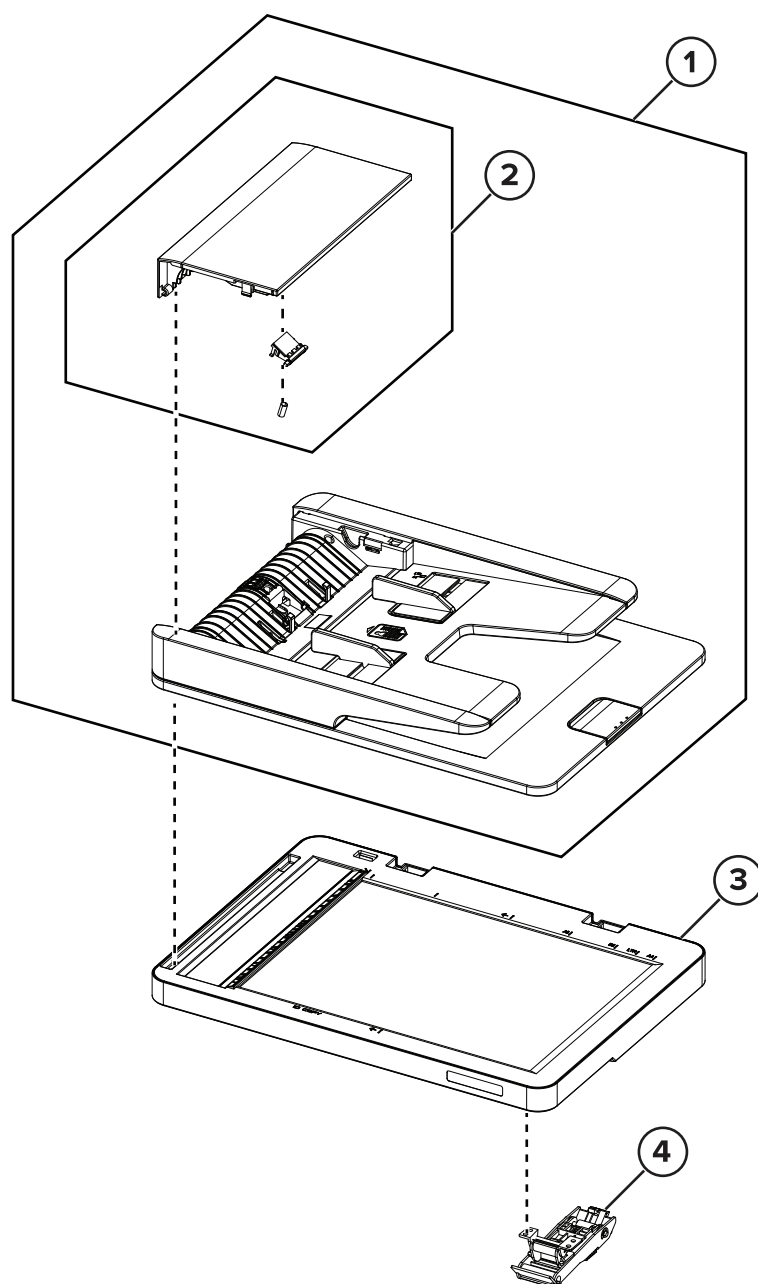
Assembly 6: Electronics



Assembly 6: Electronics

Asm-index	P/N	Units/mach	Units/FRU	Description	Removal procedure
1	41X2456	1	1	Printhead	“Printhead removal” on page 262
2	41X2457	1	1	Transfer roller	“Transfer roller removal” on page 249
3	41X2459	1	1	LVPS, 110 V	“LVPS removal” on page 235
3	41X2460	1	1	LVPS, 220 V	“LVPS removal” on page 235
4	41X2458	1	1	HVPS	“HVPS removal” on page 236
5	41X2461	1	1	Controller board (MB2236adw)	“Controller board removal” on page 234
5	41X2515	1	1	Controller board (MB2236adwe)	“Controller board removal” on page 234
6	41X2463	1	1	Fuser, 110 V	“Fuser removal” on page 252
6	41X2464	1	1	Fuser, 220 V	“Fuser removal” on page 252
NS	41X2482	1	1	Cable kit parts pack	--
NS	41X2634	1	1	Control panel and fax FFC cable	--
NS	41X2617	1	1	Front USB cable	--

Assembly 7: Scanner



Assembly 7: Scanner

Asm-index	P/N	Units/mach	Units/FRU	Description	Removal procedure
1	41X2476	1	1	ADF scanner assembly	“ADF scanner and flatbed scanner removal” on page 273
2	41X2480	1	1	ADF pick assembly	“ADF pick assembly removal” on page 272
3	41X2478	1	1	Flatbed scanner	“ADF scanner and flatbed scanner removal” on page 273
4	41X2629	1	1	Scanner stand	“Scanner stand removal” on page 271